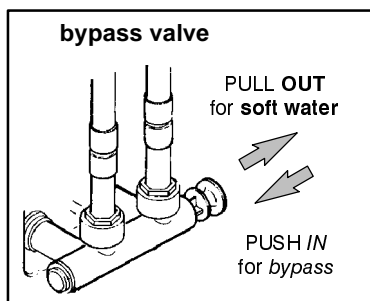


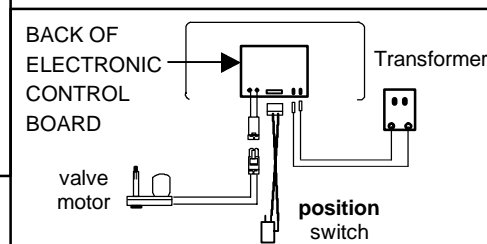
# MOTOR/SWITCH KIT INSTALLATION INSTRUCTIONS

Note: Before attempting to replace the motor and switch, unplug the transformer from electrical power.

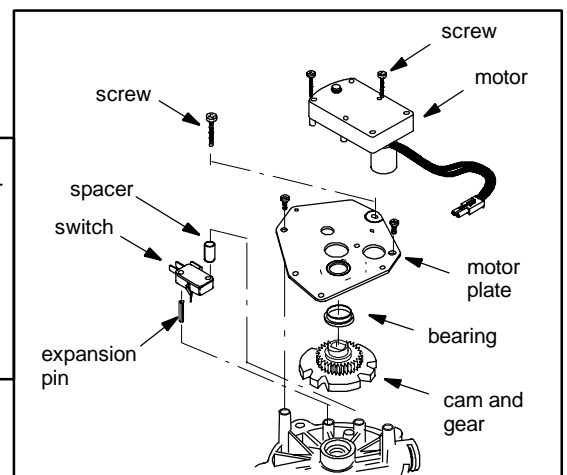
1. Push the bypass valve in for bypass. **Figure 1.**
2. Remove the salt hole cover and set aside.
3. Slide the top cover forward to expose valve.
4. Disconnect wiring harness from position switch. **Figure 2.**
5. Unplug the motor terminals from the back of the electronic control board. **Figure 2.**
6. Set top cover aside.
7. Remove the two screws on the motor and remove motor. **Figure 3.**
8. Remove the two small screws holding the motor plate onto the valve. Set aside. Remove the screw above the position switch, remove position switch and spacer. Set aside. Remove motor plate and bearing and set aside. **Figure 3.**
9. Insert new expansion pin into hole on top of valve. Slip new position switch onto expansion pin. **Figure 3.**
10. Position motor plate over the valve, making sure the bearing is in place before tightening screws. Slip the switch screw through the hole above the switch and insert screw through motor plate and spacer. Tighten screws. **Figure 3.**
11. Position new motor above motor plate. Push screws through holes on motor and tighten to the motor plate. **Figure 3.**
12. Once all screws are secure and new motor and position switch are in place, attach new wire harness to position switch and to connector from the electronic control board. Attach motor wire terminal to the correct connector coming from the electronic control board. **Figure 2.**
13. Plug in transformer. Pull the bypass valve stem out for soft-water position. **Figure 1.**
14. To verify proper function of the softener, complete the manual advance diagnostics as outlined in the **Installation/Operation manual.**



**Figure 1**



**Figure 2**



**Figure 3**